

Magnetic Particle Clutches & Brakes

Basic Information

For more information and specifications visit our website:

www.precisiontork.com

- Handle and install with care.
- Keep away from metal filings and fine metal chips.
- Shield from liquids.
- Do not use a hammer on any surface of this product.

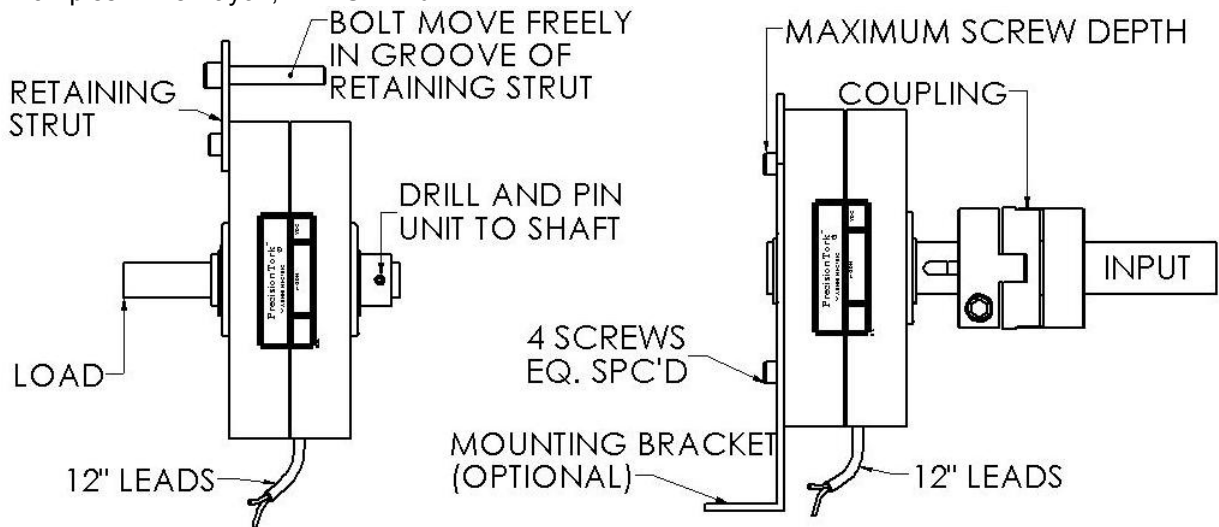
SHAFT SIDE LOAD CAPACITIES

MP2=	2 lbs. @ 1"	8.90N @ 25.4mm
MP15=	15 lbs. @ 1"	66.72N @ 25.4mm
MP25=	25 lbs. @ 1"	111.20N @ 25.4mm
MP70=	70 lbs. @ 1"	311.38N @ 25.4mm
MP120=	120 lbs. @ 1"	533.79N @ 25.4mm
MP240=	240 lbs. @ 1"	1067.57N @ 25.4mm

NOTE: IF LOAD IS PLACED FURTHER THAN 1" (25.4mm) FROM THE FACE OF THE UNIT, THEN THE AMOUNT OF LOAD MUST BE REDUCED PROPORTIONALLY.

Brake Installation

Examples: Wire Payoff, Film Unwind



Clutch Installation

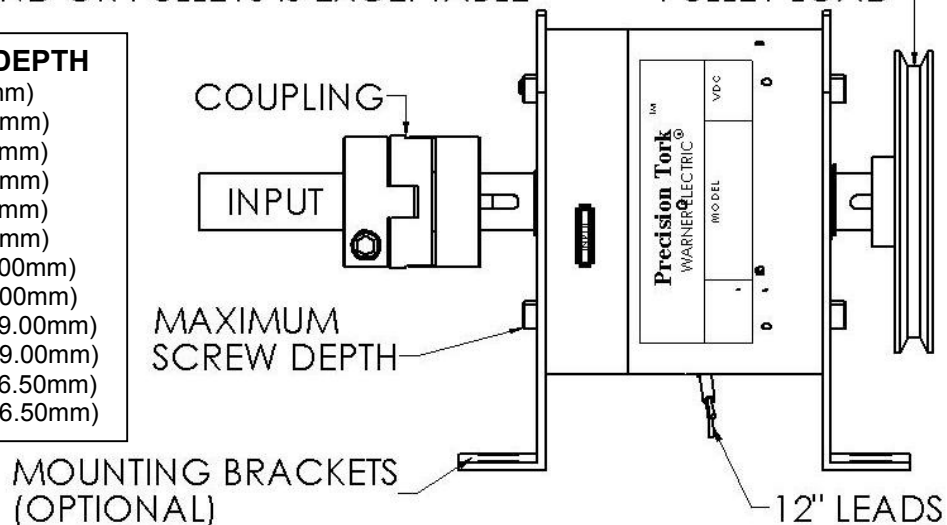
Examples: Scrap Rewind, Conveyor Drive, Wire Winding

ANY COMBINATION OF COUPLING AND OR PULLEYS IS EXCEPTABLE

GEAR OR PULLEY LOAD

SCREW THREAD x MAX. DEPTH

MPB2=	6-32 x .270in (M4 x 6.85mm)
MPC2=	6-32 x .500in (M4 x 12.70mm)
MPB15=	8-32 x .300in (M5 x 7.62mm)
MPC15=	8-32 x .500in (M5 x 7.62mm)
MPB25=	8-32 x .300in (M5 x 7.62mm)
MPC25=	8-32 x .500in (M5 x 7.62mm)
MPB70=	10-32 x .500in (M5 x 16.00mm)
MPC70=	10-32 x .500in (M5 x 16.00mm)
MPB120=	1/4-20 x .750in (M6 x 19.00mm)
MPC120=	1/4-20 x .750in (M6 x 19.00mm)
MPB240=	1/4-20 x .650in (M6 x 16.50mm)
MPC240=	1/4-20 x .650in (M6 x 16.50mm)



WARNER ELECTRIC®

449 Gardner Street, S. Beloit, IL 61080 • Phone 800-825-9050 • Fax 815-389-2582