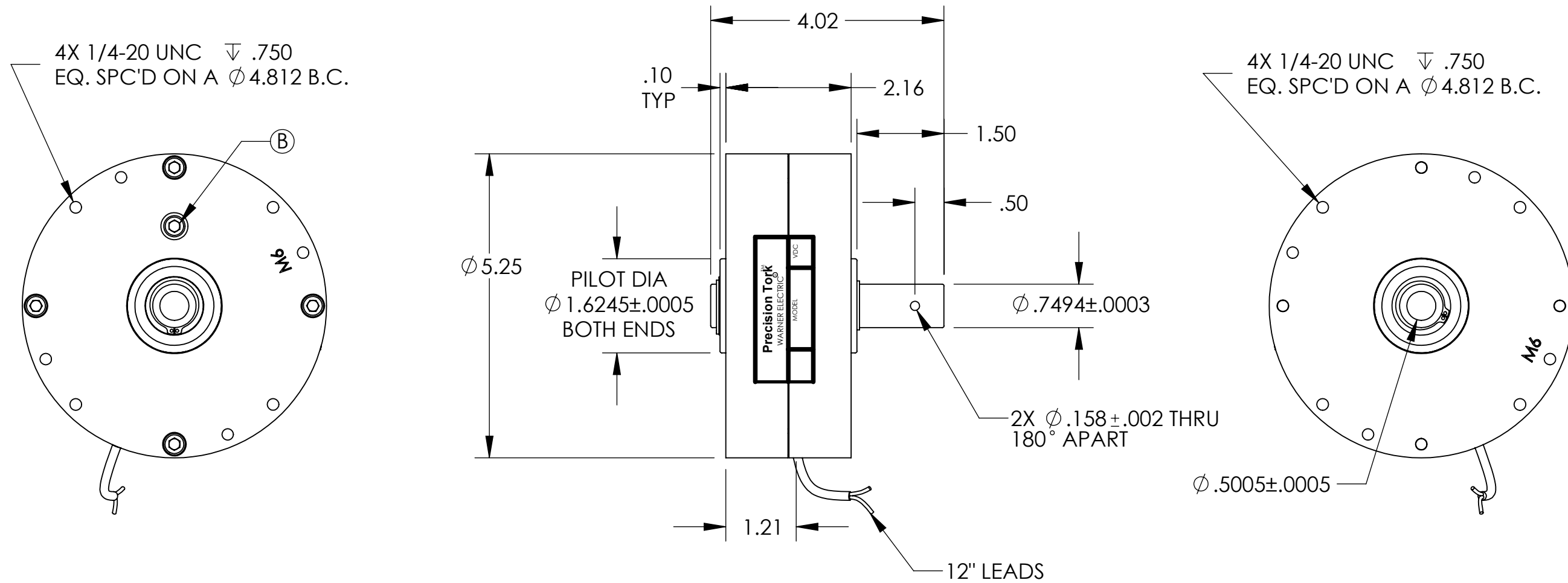


VOLTAGES: 24, 90 VDC
 RATED TORQUE: 120 LB-IN
 MAX. HEAT DISSIPATION: 140 WATTS

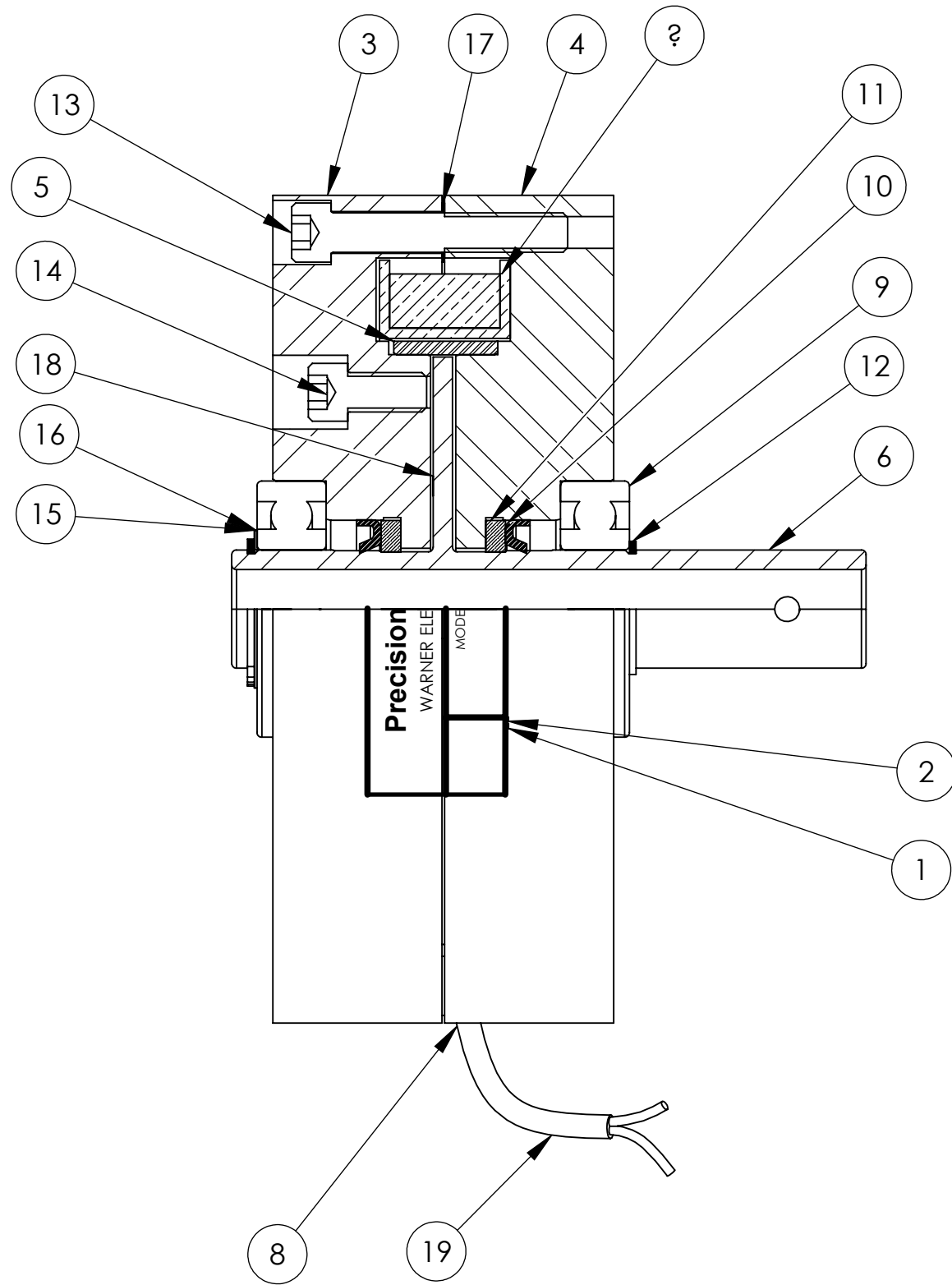


REV.	DESCRIPTION	DATE	NUMBER
B	UPDATED FILLER CAP	2/24/2010	769
A	INITIAL RELEASE IN SOLIDWORKS	7/7/2006	163

PROPRIETARY AND CONFIDENTIAL
 THE INFORMATION CONTAINED IN THIS DRAWING IS THE SOLE PROPERTY OF PRECISION TORQUE CONTROL. ANY REPRODUCTION IN PART OR AS A WHOLE WITHOUT THE WRITTEN PERMISSION OF PRECISION TORQUE CONTROL IS PROHIBITED.

UNLESS OTHERWISE SPECIFIED:		NAME	DATE
DIMENSIONS ARE IN INCHES. ALL DIMENSIONS ARE PRE-FINISH. REMOVE ALL SHARP EDGES .005/.015		JHE	07-06-06
TOLERANCES: ANGULAR = \pm 0.5° TWO PLACE DECIMAL = \pm 0.015 THREE PLACE DECIMAL = \pm 0.010		MSCOTT	07-24-06
ALL MACHINED SURFACES TO BE: PERPENDICULAR, CONCENTRIC, PARALLEL WITHIN 0.005 TIR			
DO NOT SCALE DRAWING			

PRECISION TORQUE CONTROL Midland, MI U.S.A.		
TITLE: ASSEMBLY		
DENSITY:	lbs/cu in	
WEIGHT:	12.52 lbs	
INERTIA:	lbs sq in	
MATERIAL	STEEL	
FINISH	YELLOW DICHROMATE	
SIZE	DWG. NO.	REV
B	MPB120-1	B
SCALE: 1:2	DATE OF PRINT: 2/24/2010	



NO.	PART NO.	DESCRIPTION	QTY.
1	M099-9001	LABEL-MODEL#	1
2	M099-9003	LABEL-OVERLAY	1
3	M120-3001	END CAP	1
4	M120-3002	END CAP	1
5	M120-5001	SPACER	1
6	M120-R001	ROTOR	1
7	SEE CHART	COIL	1
8	YAD1-0006	3M HOT MELT	1
9	YBAB-0010	BEARING SEAL	2
10	YLS1-0003	GREASE SEAL	2
11	YLS2-0003	FELT SEAL	2
12	YRS2-0006	EXT RET RING	2
13	YSC1-0016	SHCS 1/4-20 x 1 1/2 SS	4
14	YSC1-0020	SHCS 1/4-20 X 1/2 SS	1
15	YWS1-0010	SHIM	1
16	YWS1-0011	SHIM	1
17	YWS1-0016	SHIM	4
18	YZ00-0015	MAGNETIC POWDER	1
19	YZ00-0021	SHRINK TUBE	1

MODEL	VOLTAGE	COIL#	WIRE COLOR
MPB120-1-24	24 VDC	M120-C024	RED
MPB120-1-90	90 VDC	M120-C090	BLACK

PROPRIETARY AND CONFIDENTIAL
 THE INFORMATION CONTAINED IN THIS DRAWING IS THE SOLE PROPERTY OF PRECISION TORQUE CONTROL. ANY REPRODUCTION IN PART OR AS A WHOLE WITHOUT THE WRITTEN PERMISSION OF PRECISION TORQUE CONTROL IS PROHIBITED.

UNLESS OTHERWISE SPECIFIED:
 DIMENSIONS ARE IN INCHES.
 ALL DIMENSIONS ARE PRE-FINISH.
 REMOVE ALL SHARP EDGES .005/.015

TOLERANCES:
 ANGULAR = ±0.5°
 TWO PLACE DECIMAL = ±0.015
 THREE PLACE DECIMAL = ±0.010

ALL MACHINED SURFACES TO BE:
 PERPENDICULAR, CONCENTRIC,
 PARALLEL WITHIN 0.005 TIR

DO NOT SCALE DRAWING

	NAME	DATE
DRAWN	JHE	07-06-06
ENG APPR.	MSCOTT	07-24-06
DENSITY:	lbs/cu in	
WEIGHT:	12.52 lbs	
INERTIA:	lbs sq in	
MATERIAL	STEEL	
FINISH	YELLOW DICHROMATE	

PRECISION TORQUE CONTROL
Midland, MI U.S.A.

TITLE:
ASSEMBLY

SIZE	DWG. NO.	REV
B	MPB120-1	B

SCALE: 1:1 DATE OF PRINT: 2/24/2010