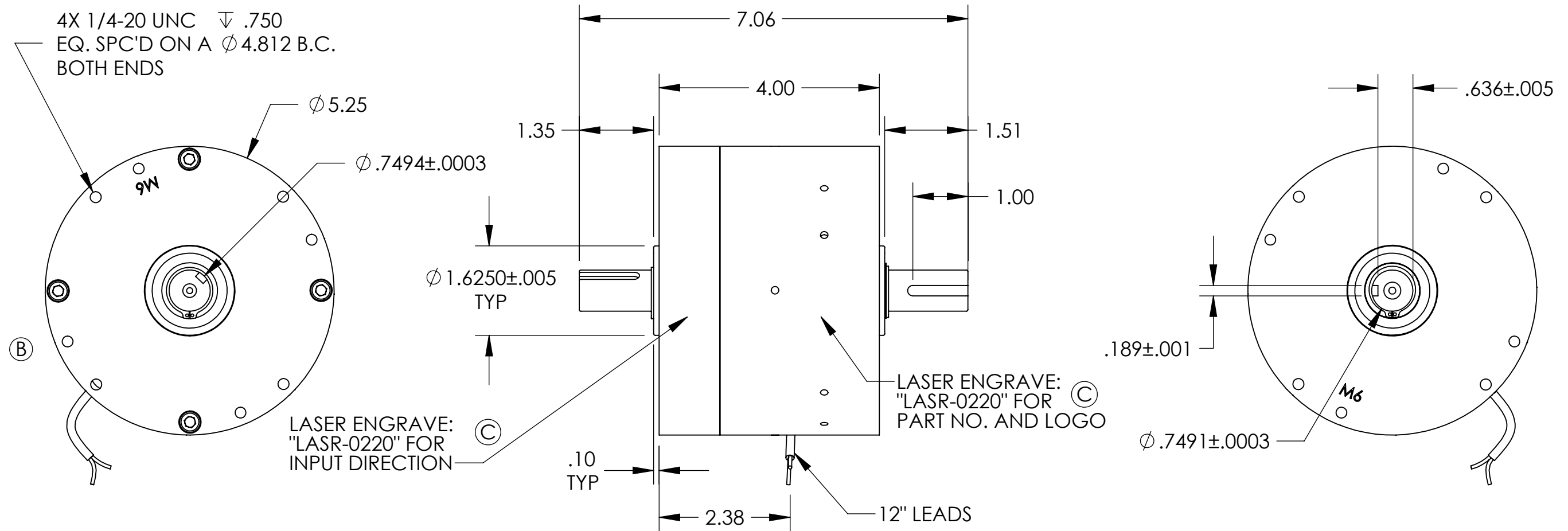


AVAILABLE VOLTAGES: 24, 90 VDC  
 RATED TORQUE: 120 LB-IN  
 MAX. HEAT DISSIPATION: 140 WATTS



REV.	DESCRIPTION	DATE	NUMBER
C	REPLACED STICKERS WITH LASER ENGRAVE	7/25/2023	2408
B	UPDATED FILLER CAP	2/24/2010	769
A	INITIAL RELEASE IN SOILDWORKS	7/11/2006	163

**PROPRIETARY AND CONFIDENTIAL**  
 THE INFORMATION CONTAINED IN THIS DRAWING IS THE SOLE PROPERTY OF PRECISION TORQUE CONTROL. ANY REPRODUCTION IN PART OR AS A WHOLE WITHOUT THE WRITTEN PERMISSION OF PRECISION TORQUE CONTROL IS PROHIBITED.

UNLESS OTHERWISE SPECIFIED:  
 DIMENSIONS ARE IN INCHES.  
 ALL DIMENSIONS ARE PRE-FINISH.  
 REMOVE ALL SHARP EDGES .005/.015

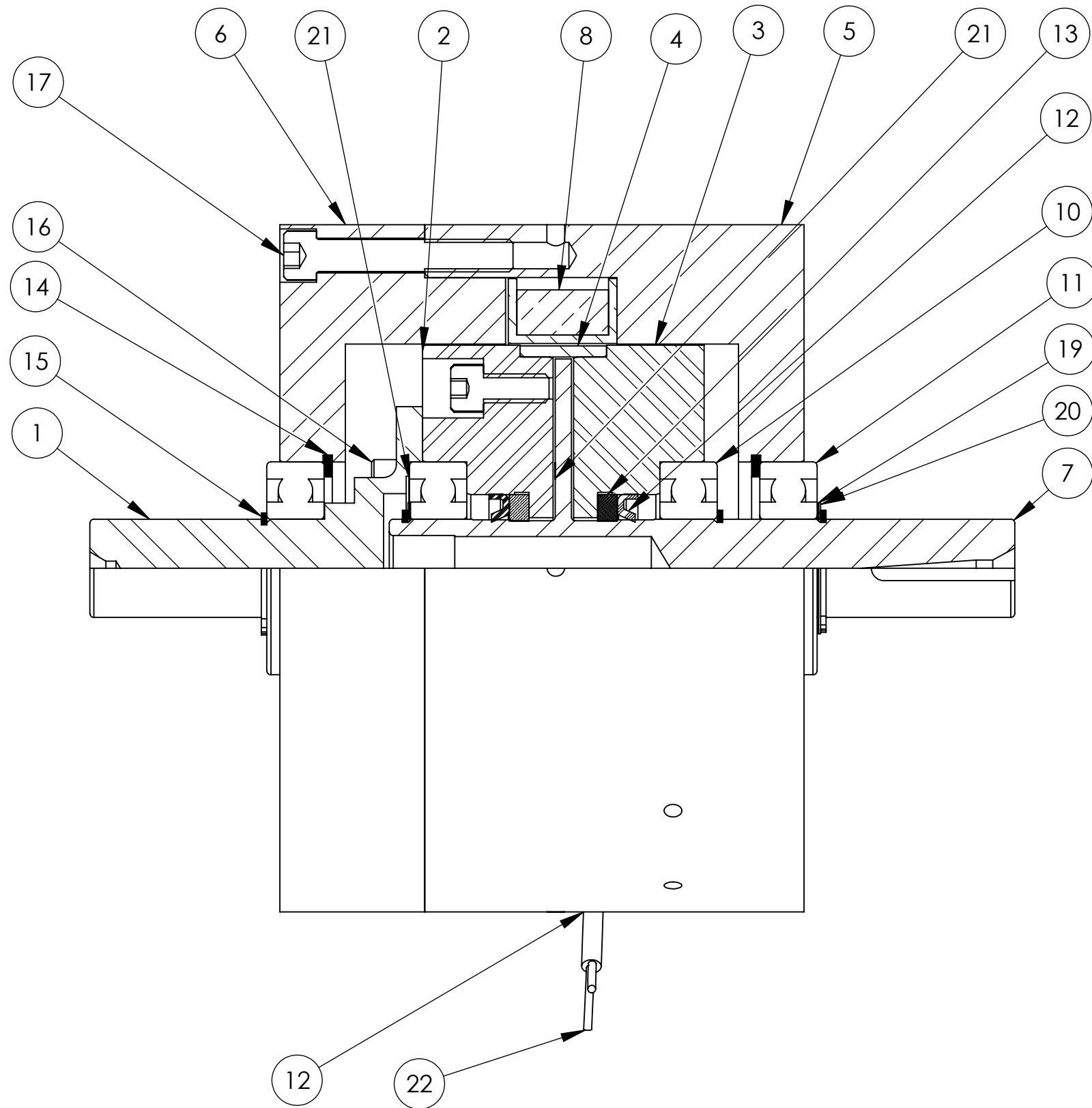
TOLERANCES:  
 ANGULAR =  $\pm$ 0.5°  
 TWO PLACE DECIMAL =  $\pm$ 0.015  
 THREE PLACE DECIMAL =  $\pm$ 0.010

ALL MACHINED SURFACES TO BE:  
 PERPENDICULAR, CONCENTRIC,  
 PARALLEL WITHIN 0.005 TIR

DO NOT SCALE DRAWING

	NAME	DATE
DRAWN	JHE	07-11-06
ENG APPR.	MSCOTT	07-24-06
DENSITY:	lbs/cu in	
WEIGHT:	22.24 lbs	
INERTIA:	lbs sq in	
MATERIAL	STEEL	
FINISH	YELLOW DICHROMATE	

<b>PRECISION TORQUE CONTROL</b> Midland, MI U.S.A.		
TITLE: <b>ASSEMBLY</b>		
SIZE <b>B</b>	DWG. NO. <b>MPC120-1</b>	REV <b>C</b>
SCALE: 1:2	DATE OF PRINT: 7/25/2023	



NO.	PART NO.	DESCRIPTION	QTY.
1	M070-2101	INPUT SHAFT	1
2	M120-3003	END CAP	1
3	M120-3004	END CAP	1
4	M120-5001	SPACER	1
5	M120-6001	OUTPUT HOUSING	1
6	M120-6002	INPUT HOUSING	1
7	M120-R002	ROTOR	1
8	SEE CHART	COIL	1
9	YAD1-0006	3M HOT MELT	1
10	YBAB-0010	BEARING SEAL	2
11	YBAB-0011	BEARING SHIELD	2
12	YLS1-0003	GREASE SEAL	2
13	YLS2-0003	FELT SEAL	2
14	YRS1-0006	INT RET RING	2
15	YRS2-0006	EXT RET RING	4
16	YSC1-0004	8004549 SHCS 10-32 X 1/2 SS	4
17	YSC1-0016	SHCS 1/4-20 x 1 1/2 SS	4
18	YSC1-0020	SHCS 1/4-20 X 1/2 SS	1
19	YWS1-0010	SHIM	2
20	YWS1-0011	SHIM	2
21	YZ00-0015	MAGNETIC POWDER	1
22	YZ00-0021	SHRINK TUBE	1

MODEL	VOLTAGE	COIL#	WIRE COLOR
MPC120-1-24	24 VDC	M120-C024	RED
MPC120-1-90	90 VDC	M120-C090	BLACK

**PROPRIETARY AND CONFIDENTIAL**  
 THE INFORMATION CONTAINED IN THIS DRAWING IS THE SOLE PROPERTY OF PRECISION TORQUE CONTROL. ANY REPRODUCTION IN PART OR AS A WHOLE WITHOUT THE WRITTEN PERMISSION OF PRECISION TORQUE CONTROL IS PROHIBITED.

UNLESS OTHERWISE SPECIFIED:  
 DIMENSIONS ARE IN INCHES.  
 ALL DIMENSIONS ARE PRE-FINISH.  
 REMOVE ALL SHARP EDGES .005/.015

TOLERANCES:  
 ANGULAR = ±0.5°  
 TWO PLACE DECIMAL = ±0.015  
 THREE PLACE DECIMAL = ±0.010

ALL MACHINED SURFACES TO BE:  
 PERPENDICULAR, CONCENTRIC,  
 PARALLEL WITHIN 0.005 TIR

DO NOT SCALE DRAWING

	NAME	DATE
DRAWN	JHE	07-11-06
ENG APPR.	MSCOTT	07-24-06
DENSITY:	lbs/cu in	
WEIGHT:	22.24 lbs	
INERTIA:	lbs sq in	
MATERIAL	STEEL	
FINISH	YELLOW DICHROMATE	

**PRECISION TORQUE CONTROL**  
**Midland, MI U.S.A.**

TITLE:  
**ASSEMBLY**

SIZE	DWG. NO.	REV
<b>B</b>	<b>MPC120-1</b>	<b>C</b>

SCALE: 1:1    DATE OF PRINT: 7/25/2023